

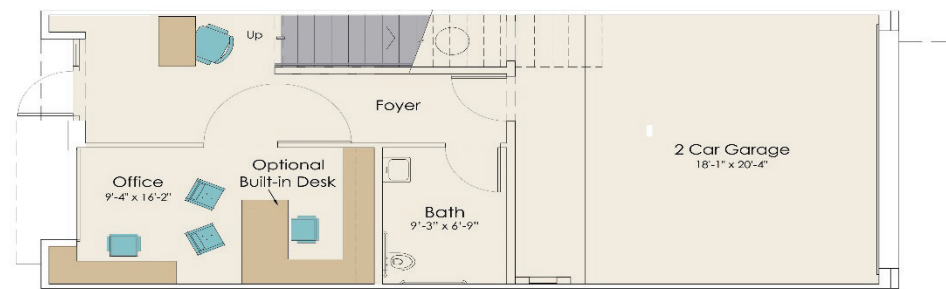
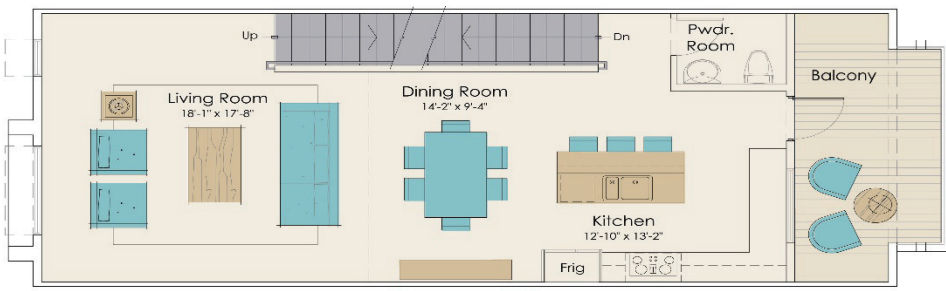
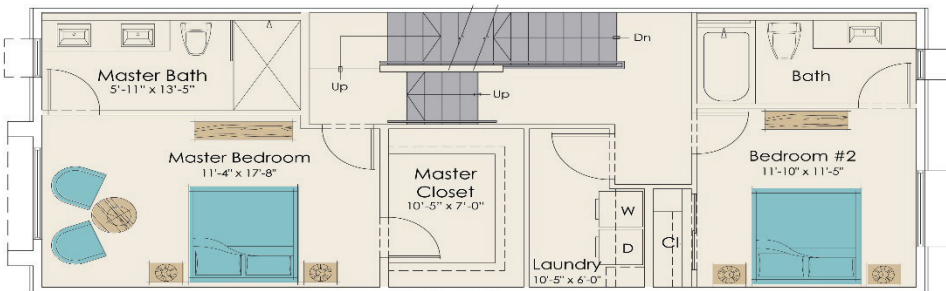
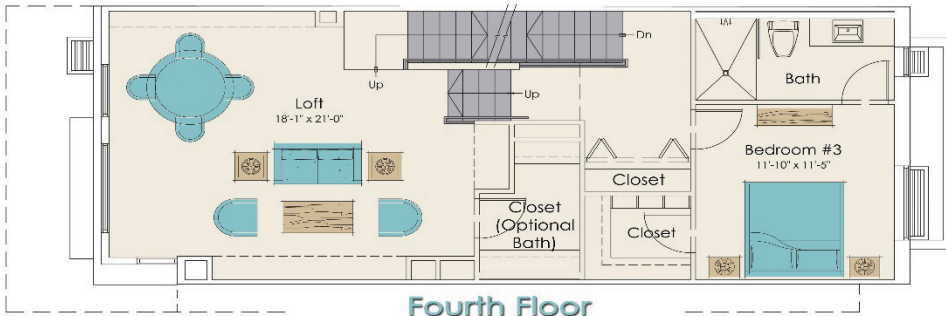
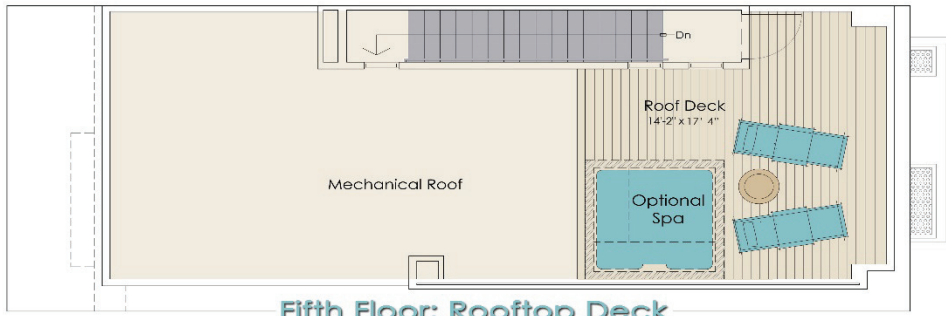


SCOTTSDALE

THE REMBRANDT TOWNHOME/CONDO **SOLD OUT**

PLAN C
3,094 S.F.

- 4 STORY
- 3 BEDROOMS
- 3 BATHROOMS
- 2 POWDER ROOMS
- LOFT DEN
- GREAT ROOM
- ROOFTOP DECK
- BALCONY
- LAUNDRY ROOM
- 2 CAR GARAGE
- HOME OFFICE WITH
- ROLL-UP DOOR THAT
- OPENS TO COURTYARD



16510 N. 92nd Street, Unit 1003
Scottsdale, AZ 85260

888-959-SOHO (7646)
www.sohoscottsdale.com



Sales By Cambridge Properties, Inc. Keith Mishkin, Broker



Bahia Live/Work Lofts and Townhomes, LLC, 16580 N. 92nd St., Suite 2004, Scottsdale, Arizona 85260 - (480) 473-3700

In a continuing effort to meet changing conditions, Bahia Live/Work Lofts and Townhomes, LLC reserves the right to make or modify features, specifications, and/or prices without notice or obligation. All square footages and dimensions are approximate. Windows and room dimensions vary per elevation condition. Renderings and animation are artist's illustrations only, and are subject to change. Final plans may vary from preliminary floor plans. No offer to sell or lease can be made and no offer to purchase or lease can be accepted prior to issuance of Arizona Subdivision Public Report.

